

# \$320,000 - 2216 E Alvina St., Pasco

MLS® #261460

## \$320,000

3 Bedroom, 2.00 Bathroom, 1,232 sqft  
Residential on 0.17 Acres

TOWN & COUNTRY VILLAGE 3, Pasco, WA

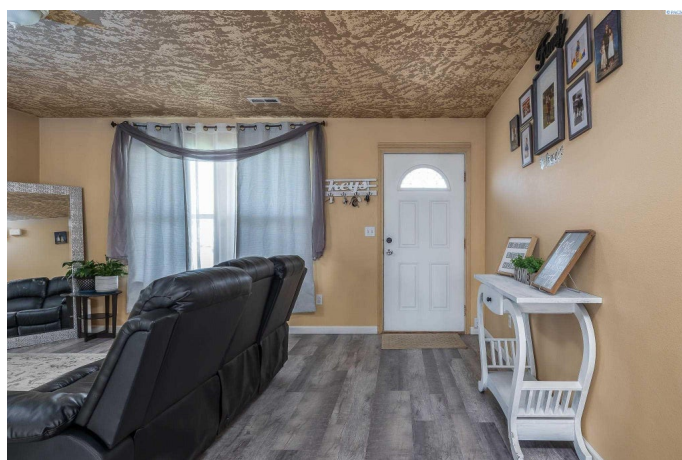
MLS# 261460 Adorable Pasco home ready for new owners! This home is the perfect option for the first-time buyer, or a perfect rental investment. It features a open floor plan, newer laminate floor throughout and a spacious kitchen with a breakfast bar, plenty of cabinet space, and dining space with access to the patio. You will find 3 bedrooms, 2 bathrooms, and a laundry area with storage space. You will enjoy the spacious backyard for entertaining, open patio area and a 2-car garage. This Move-In Ready home is conveniently located near schools, parks, and easy highway access.

Built in 2005

## Essential Information

MLS® #	261460
Price	\$320,000
Bedrooms	3
Bathrooms	2.00
Full Baths	2
Square Footage	1,232
Acres	0.17
Year Built	2005
Type	Residential
Sub-Type	Single Family
Style	Other
Status	Active

## Community Information



Address	2216 E Alvina St.
Area	Franklin
Subdivision	TOWN & COUNTRY VILLAGE 3
City	Pasco
State	WA
Zip Code	99301

### **Amenities**

Utilities	Electric
Parking	Attached, Carport - 2 Car, Garage-2 Car
# of Garages	2
Garages	Attached, Carport - 2 Car

### **Interior**

Appliances	Microwave Oven, Range/Oven, Cook Top
Heating	Forced Air, Central Air

### **Exterior**

Foundation	Concrete, Concrete Slab
------------	-------------------------

### **Additional Information**

Days on Market	5
Zoning	Residential

### **Listing Details**

Listing Office	Professional Realty Services
----------------	------------------------------

The data relating to real estate for sale on this website comes in part from the Tri Cities Association of REALTORS®. The information being provided is for consumers' personal, non-commercial use and may not be used for any purpose other than to identify prospective properties consumers may be interested in purchasing.

Listing information last updated on May 19th, 2022 at 8:32am PDT